



WIMBLEDON No.1 COURT

INTRODUCTION

In April 2013 The All England Lawn Tennis Club published its new Master Plan for the long term improvement of the Club and Championships' facilities at Church Road, Wimbledon, with the specific aim of ensuring that Wimbledon continues to be regarded as the finest stage in world tennis.

The Master Plan presents an opportunity to reinforce the spirit of 'Tennis in an English Garden' by creating a series of distinctive character areas set within an overall landscape framework while enhancing the historic setting and identity of Wimbledon.

Publication of the Master Plan was the first step in a consultation process with a wide range of stakeholders which have taken place since then through a series of meetings, presentations and public exhibitions.

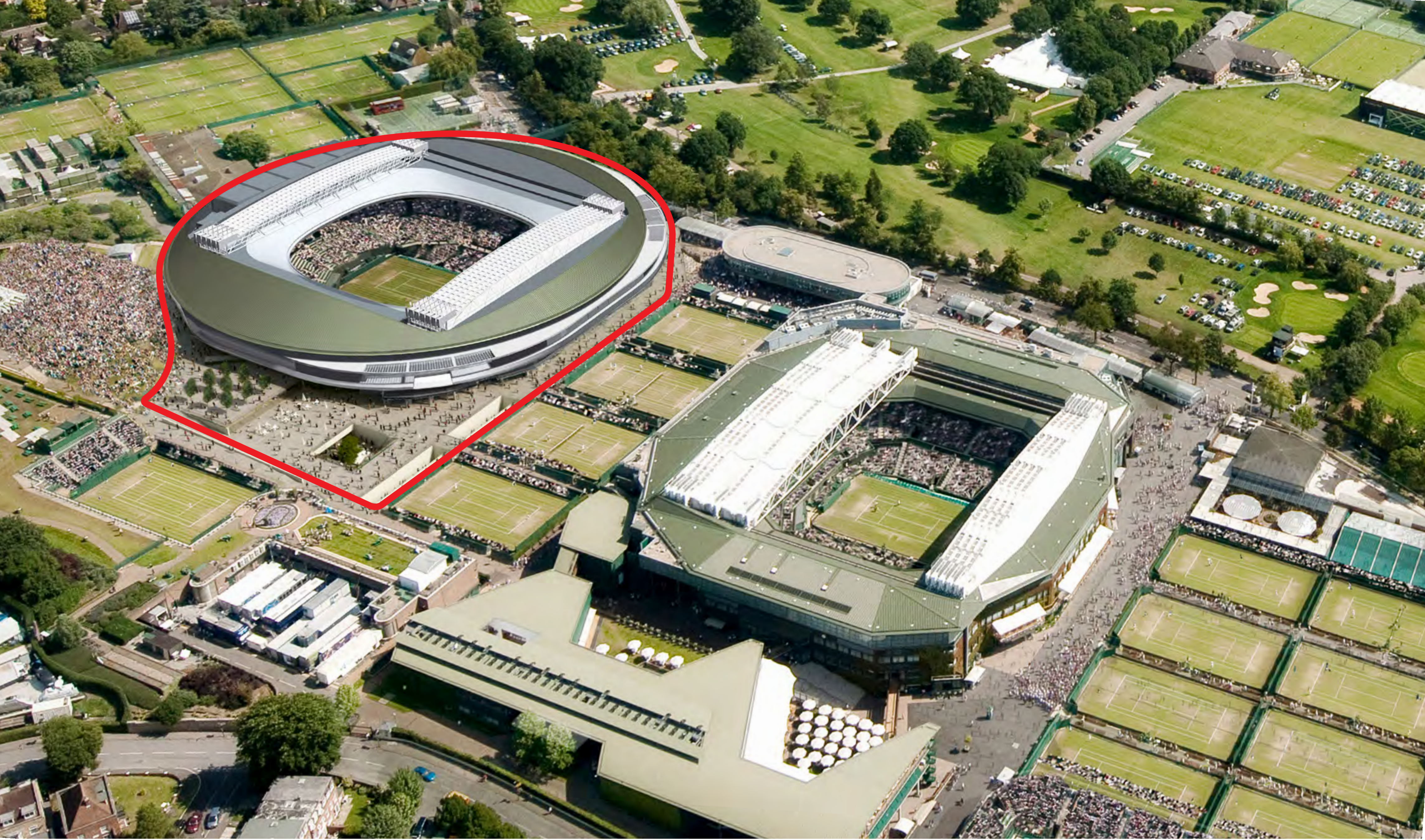
One of the first projects identified by the Master Plan was the opportunity to improve No.1 Court by installing a new fixed and retractable roof. The retractable roof will, just like Centre Court, allow for uninterrupted play irrespective of the weather thereby guaranteeing tennis for around 27,000 spectators on the two main Show Courts.

The remodelling of No.1 Court will also provide the opportunity to achieve further improvements to the visitor experience through:

- new wider, more comfortable seating throughout the Court
- two additional tiers of approximately 900 seats
- the creation of a new two-level public plaza in place of Court 19
- improved on-site concessions and catering areas around the Court
- hospitality facilities to replace some of the temporary facilities currently in use at the south of the Grounds



NO.1 COURT

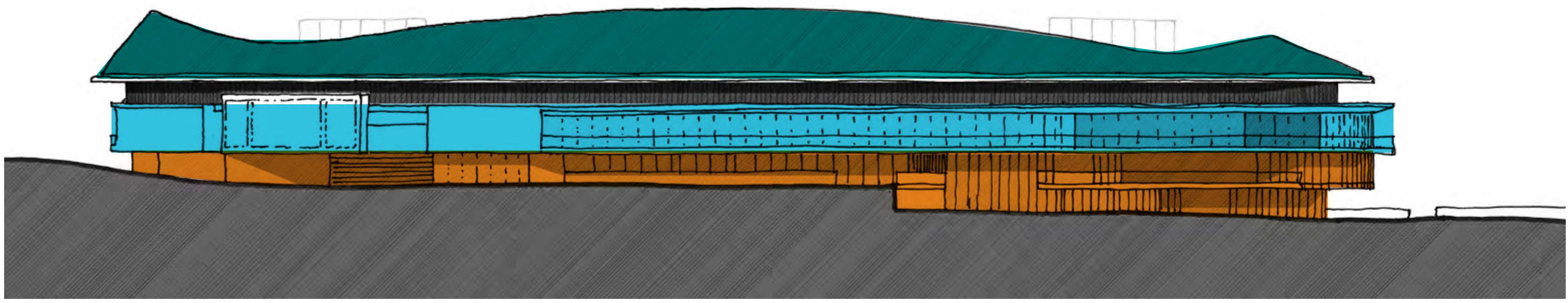


The scope of the project is contained within the red line and any developments outside the red line will be subject to a separate public consultation and planning application.

PROPOSED DESIGN

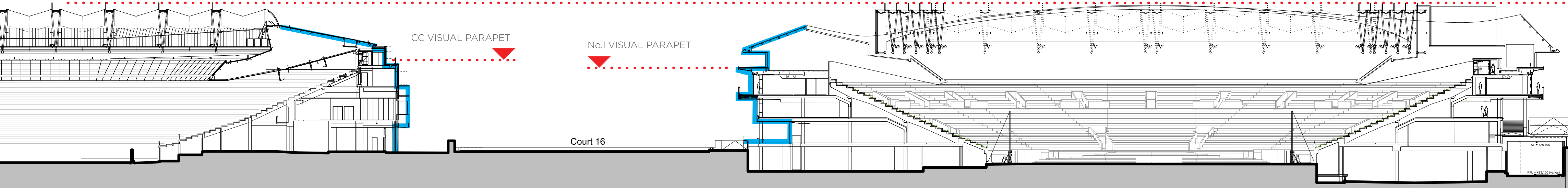
- The proposed design comprises three main constituent parts:
- a fixed and retractable roof
 - a ring comprising new seating, hospitality and commentary boxes
 - a unifying base

The shape and size of the structure is a result of the engineering required to operate the moving part of the roof and to provide sufficient light onto the court surface to promote good grass growth.



This creates the opportunity for additional seating, hospitality areas and commentary boxes. The fixed roof screens the chillers, which control the air-flow once the roof is closed, and also supports the retractable roof.

The height of the new roof while greater than the existing structure, does not exceed that of Centre Court, a key consideration in making sure that Centre Court's place as The Championships' primary stadium is maintained.



CHARACTER AREAS

NORTHERN APPROACH



Remodelled No.1 Court provides spectacular first impression on approach from Southfields.



CHARACTER AREAS

AORANGI TERRACE



The existing Aorangi Terrace is a vibrant part of the Wimbledon experience with views over Wimbledon Park and the London skyline.

The improved No.1 Court and spectators on Aorangi Terrace will benefit from a new large TV screen fully-integrated into the building facade.

Increased planting either side of the screen will give a natural backdrop for spectators viewing the action.



Existing view from Aorangi Terrace



Aorangi Terrace screen elevation

CHARACTER AREAS

SOUTH EAST ENTRANCE



A series of open sided terraces with natural light filtering down from rooflights above will help to define this area as one of the primary entrances to the stadium.



Existing view south east corner



Elevation

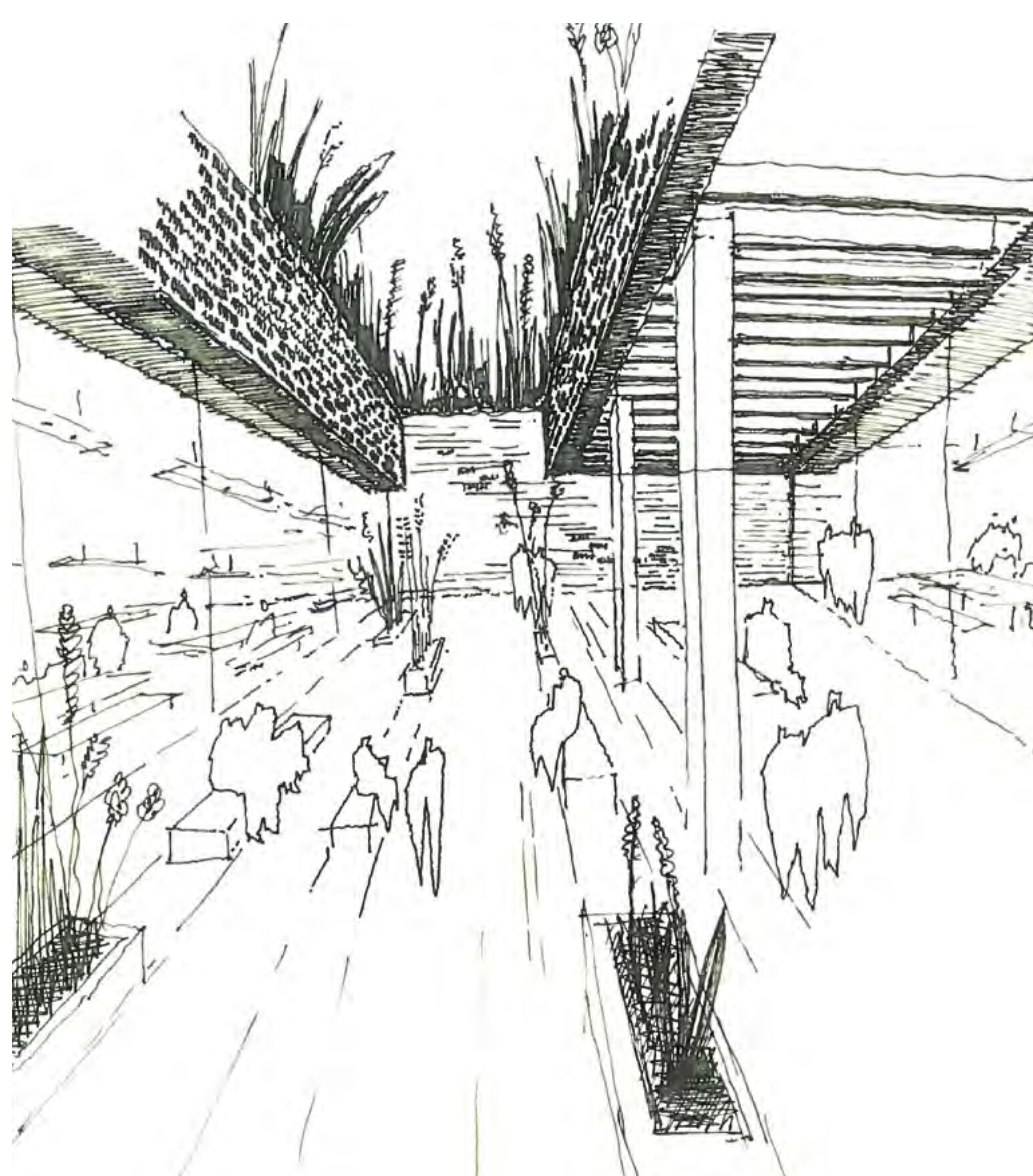
CHARACTER AREAS

COURT 19 PLAZA



Court 19 will be replaced by a plaza made up of a series of terraced courtyard garden spaces, each with a slightly different character provided through a careful choice of plants, furniture and materials.

The Aorangi Food Court will offer a delightful public space where spectators can relax and enjoy the English garden ambience.





WIMBLEDON No.1 COURT

NEXT STEPS

We welcome your views on the No.1 Court proposals as this will aid the development team as the proposals continue to evolve and as individual projects are brought forward.



HAVE YOUR SAY

A copy of the Master Plan exhibition material is available to view on the Wimbledon website at www.wimbledon.com/masterplan

Comments should be sent by email to consultation@rolfe-judd.co.uk

or by post to

No.1 Court Proposals

C/o Rolfe Judd Planning, Old Church Court, The Oval, London, SW8 1NZ

RAYNES PARK



THE WIMBLEDON FOUNDATION

The Wimbledon Foundation is the charity of The All England Lawn Tennis Club (AELTC). The Foundation builds on the success of an extensive programme of community and charitable activities over a number of years. Its mission is to change people’s lives using the resources and heritage of Wimbledon, aiming to:

- use the power of sport, particularly tennis, to advance young people’s education and development
- make a real contribution to meet social needs in the local community
- encourage and support charities and community activities relating to The Championships

The Wimbledon Junior Tennis Initiative (WJTI) is one of its main activities.



WIMBLEDON JUNIOR TENNIS INITIATIVE

The WJTI is a community tennis programme in Merton and Wandsworth in which more than 150,000 children have participated since 2001. All England Club Head Coach Dan Bloxham and his team visit two different schools each week in term time giving a full day’s introduction to tennis and sports skills.

Each weekend around 300-350 children of all abilities attend the tennis coaching held at the Club from 8.00am-4.30pm over 47 weekends a year. In addition to this, some 40 WJTI players are involved in squad training twice a week from 3.00-7.00pm most weeks of the year. One-to-one weekday coaching for selected players takes place between 7.00-10.00am. The WJTI helps also players learn to coach tennis, pass LTA coaching qualifications and coach the young players following on.

MOVING THE WJTI TO THE RAYNES PARK PLAYING FIELDS

To enable the WJTI to continue its work with local schools and junior players during forthcoming construction activities associated with the improvement works at the AELTC’s Church Road Grounds (including the proposed works to No.1 Court), it is proposed to relocate them to the Raynes Park Playing Fields (on Grand Drive).

This will involve the installation of three new outdoor all-weather tennis courts and three new covered tennis courts within an air-dome. A raised seating area will be provided for parents or guardians attending with younger children.

The air-dome will be made of a high quality opaque PVC coated fabric to limit light spill from the interior at night. Additional landscaping and fencing will also be provided around the facility to provide screening and security. Changing, toilet and storage facilities will also be provided along with a 100m three-lane, straight running track.

Tennis-specific low height and low light-spill floodlighting is proposed for the outdoor courts in order to maximise the year-round potential for outside play. Use of the lights will be carefully controlled to ensure they are switched off at a reasonable time each evening.

PROGRAMME

The Club has carried out extensive consultation with the Council, Sport England and local residents, resulting in revised proposals to reduce any potential for impact upon the surrounding area. This has included lowering the height of the air dome, controlling the hours of floodlighting and increasing the level of planting/landscaping around the site.

The intention is to submit a planning application for the new facility at the end of August 2014, thus enabling the WJTI to relocate to the playing fields during 2015 and avoiding the need to relocate the initiative to alternative premises outside the Borough.