



SUPPORTING OUR LOCAL COMMUNITY IN MERTON





WIMBLEDON FOUNDATION'S IMPACT

OCTOBER 2024 TO OCTOBER 2025



£556k

awarded in grants and donations to Merton organisations



£479k

awarded to projects supporting people in both Merton and Wandsworth



48

Merton organisations supported (plus 12 organisations working across both Merton and Wandsworth)



15,000

people reached



143

people from Merton and Wandsworth employed at The Championships via Work at Wimbledon



Champions of Merton and Wandsworth

In the spring, the Foundation celebrated inspirational individuals making a difference to the lives of people in our local community through 'Champions of Merton and Wandsworth', a striking photography exhibition which went on display at The Piazza, Wimbledon thanks to the support of LoveWimbledon.

Set for Success

The Foundation's national programme, Set for Success, is running in 81 schools across the UK including three in Merton: Harris Academy Morden, Rutlish School and Wimbledon College. Set for Success helps young people at risk of dropping out or exclusion to develop life and leadership skills with the opportunity to gain an accredited qualification at the end of the two-year programme. Pupils from Rutlish School and Wimbledon College attended an Inspiration Day at Wimbledon in February learning about different careers in sport from All England Club staff.



Items donated to projects in Merton this year include:

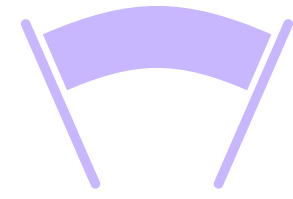
- 3,000 plants to organisations including Deen City Farm, Friends of Figge's Marsh, Merton Connected, St Raphael's Hospice and Sustainable Merton.
- Championships towels to Faith in Action Merton Homelessness Project.
- Women and children's clothing to Saving Grace for Purpose, Merton Centre for Independent Living and Home-Start Merton.
- Tennis nets to courts across the borough.





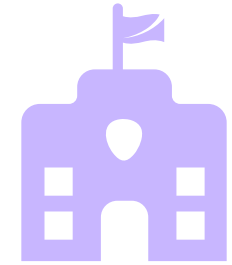
COMMUNITY ENGAGEMENT

OCTOBER 2024 TO OCTOBER 2025



2,600

local residents from Merton and Wandsworth attended community events at the All England Club



22

Merton schools engaged with our Learning programme through a range of events



2,500

children at Merton primary schools received free tennis coaching from the Wimbledon Junior Tennis Initiative

Over the past year we have welcomed 2,600 local people to community events at the All England Club including our annual Community Open Weekend held in February and our **Nature Weekends** where residents can learn about the seasons, local wildlife and the steps we take to look after nature on our Estate.



We are also delighted to be at Canons House each October half-term, bringing a slice of Wimbledon with tennis-inspired arts and crafts activities, and doing the same at the Merton Big Sports Day of which we are proud to be a headline sponsor.



Wimbledon Junior Tennis Initiative (WJTI)

- During the academic year 2024-25, the WJTI worked with 18 schools in Merton for six-week periods and visited a further 11 schools giving free coaching to more than 2,500 children.
- Four schools received visits from the Learning team ahead of coaching to have a short assembly and learn about Wimbledon.
- Kit bags were delivered to the 18 schools the WJTI visited for six weeks allowing the schools to continue playing tennis after the WJTI sessions had finished.
- 50 children took part in the annual WJTI exhibition on the final Sunday of The Championships playing on the grass courts in front of the Clubhouse.

AELTC Community Tennis Centre, Raynes Park

- Around 300 children receive free weekly coaching at the Community Tennis Centre as part of the WJTI programme.
- St John Fisher Primary school visits twice a week during term time to receive free tennis coaching for years 2 and 4.
- The Community Tennis Centre team works closely with the Merton School Sport Partnership (MSSP), providing them with access to facilities free of charge 15 times a year to host schools' events, disability sporting events and teacher training.
- Following the completion of the sports and community facilities, we are delighted to have improved the biodiversity of the site by 30%. A new swale is attracting a range of wildlife and we are pleased to see hedgehogs have returned to the site as well.



Learning and Early Years Programme

Our award-winning Learning programme, generously supported by Barclays, offers engaging, inspiring and interactive workshops for every key learning stage.

- During The Championships, our Learning team hosted assemblies in 11 Merton primary and secondary schools, teaching 3,250 pupils about the people that make Wimbledon happen each year.
- More than 2,000 guests have attended our Early Years sessions which engage the very youngest learners with Wimbledon through sensory songs and stories. Sessions are held at the All England Club and Community Tennis Centre in Raynes Park, as well as at family centres in Merton, Polka Theatre, and community events including Canons House. As part of this, we are proud to collaborate with Home-Start Merton and Polish Family Association, ensuring that we are supporting families in need across the borough.



Shine Camera Club

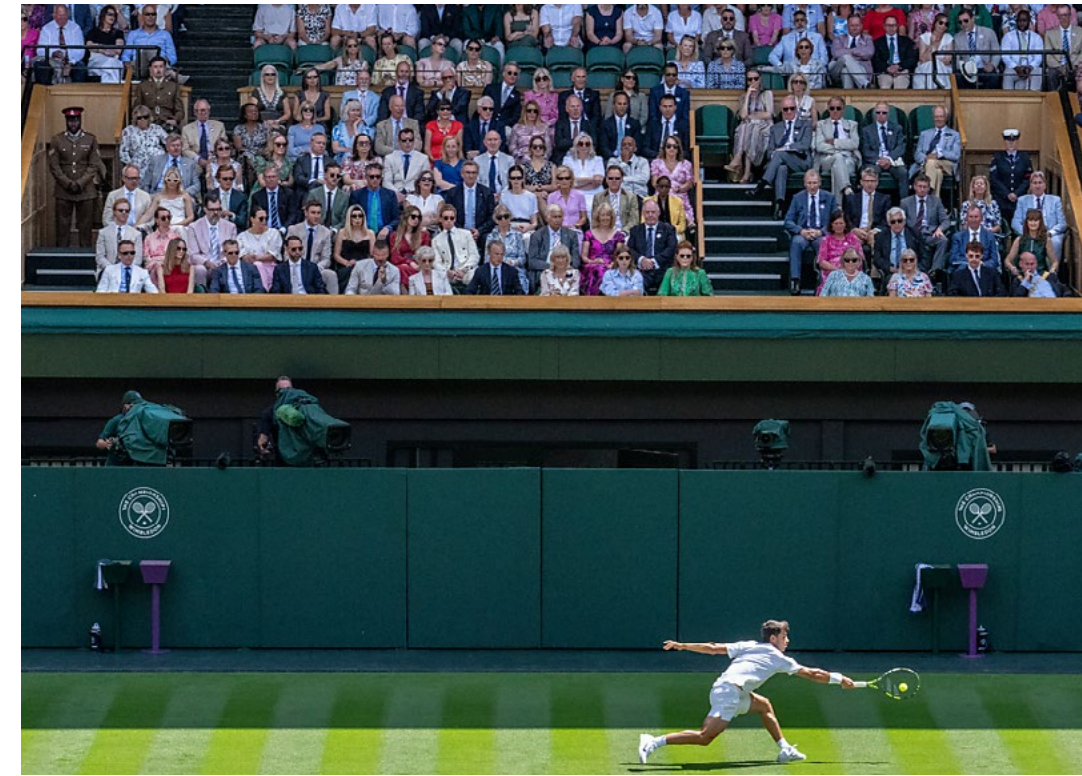
Each year our Learning team runs a Community Art Project taking an aspect of The Championships and working with a local community group to put a creative twist on it.

This year, the Learning team worked with Shine Camera Club, part of the Shine Saturday School programme in Mitcham, and led by Merton trailblazer Cindy Sasha. Drawing inspiration from Arthur Ashe and Billie Jean King as trailblazers and role models, Shine Camera Club participants identified local Merton role models and captured their portraits which were displayed at a special exhibition at Elys and at The Championships Qualifying Competiton.

THE CHAMPIONSHIPS



The Foundation welcomed 192 guests from 41 Merton charities including Attic Theatre Company, CDARS, Home-Start Merton, Inner Strength Network and Voices of Hope.



Representatives from Faith in Action Merton Homelessness Project were invited to the Royal Box by the AELTC Chair, Debbie Jevans.



Two Work at Wimbledon employees met HRH The Princess of Wales ahead of the Ladies' Singles Final.



Merton resident Sophie Kneen, 12, performed the coin toss at the Ladies' Singles Final representing AFC Wimbledon Foundation's **Women and Girls' Inclusion Project**, which is funded by the Wimbledon Foundation.



The All England Club is proud to support Merton's ambition to become the London Borough of Sport by bringing The Championships to residents via big screens located across the borough.



We're also proud to support the Wimbledon Village window dressing competition, now in its 13th successful year, which brings a distinct Wimbledon feel and celebration to the Village and beyond.



Families with children in 30 local primary schools across Merton and Wandsworth were able to apply for up to five tickets per household for No.1 Court on finals weekend, enabling them to enjoy a day at Wimbledon.

£75m

Wimbledon is the most valuable annual sporting event to the UK economy. The UK-wide economic activity supported by the event in 2024 was estimated at £434 million. The direct economic impact on Merton in 2024 was estimated at £75 million.

90%

of the distributable surplus from The Championships is given to the Lawn Tennis Association – the national governing body for tennis in Great Britain – to benefit grassroots and high performance tennis. Last year this amounted to almost £50m.

Work at Wimbledon

The Foundation continued to grow its Work at Wimbledon scheme which helps local people facing barriers to employment to access jobs at The Championships. Information sessions were held at community venues across Merton as well as open days at Wimbledon to help those who have not been before to feel welcomed.

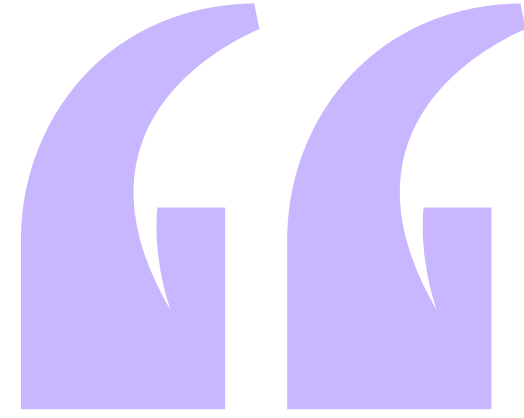
143 people supported by 16 local charities including Merton Vision, Mitcham Town Community Trust and Polish Family Association successfully secured roles across 10 teams, an increase from 60 people in 2024.

43%

of those employed said this was their first paid job.

93%

said that they feel more confident applying for future roles and have developed valuable skills to support them in their careers.



Wimbledon is the first organisation where I felt comfortable, confident and appreciated. My work ethic did not go unnoticed, and everyone was so supportive and kind. It's an environment where you wake up genuinely wanting to come to work."

Work at Wimbledon employee

In 2026 the Foundation will be partnering with two further local charities to help build pathways to employment for more people living in Merton and Wandsworth. The All England Club human resources team also works with local secondary schools and colleges to encourage students to apply for jobs at The Championships.



CONTACT US

The AELTC Community Team

community@aeltc.com | 020 8944 1066

wimbledon.com/community

X @Wimbledon

Wimbledon Foundation

foundation@aeltc.com | 020 8971 2707

foundation.wimbledon.com

X @WimbledonFdn

Charity registration number 1156996. Company registration number 8559364.