



ANNUAL REVIEW 2021



Welcome

It gives me great pleasure to welcome you to our Annual Review for 2021.

The past year has continued to be an extremely challenging time for people and communities across the world. In response, we increased our Coronavirus Fund to £2m over two years continuing to concentrate our efforts on supporting those most severely affected by the pandemic, particularly minority groups, those living with disabilities, older people, refugees and people who are homeless.

We began a new partnership with Crisis, supporting their new housing-led approach that offers homes without condition, rapidly housing homeless people in sustainable accommodation and providing wraparound support according to people's needs to help them keep their home for good. We also extended our partnership with the British Red Cross whose network of staff and volunteers work tirelessly to support the immediate needs and recovery of communities facing disaster whilst also supporting the COVID-19 response in some of the world's most affected areas.

We continue to support WaterAid's vital work improving the health and livelihoods of disadvantaged communities around the world through access to clean water and sanitation.

The highlight of the year, of course, was the return of The Championships. We were pleased to welcome guests from more than 50 supported charities and delighted to see a number of our charity partners in the Royal Box as guests of All England Club Chairman Ian Hewitt in recognition of their efforts during the pandemic.

Creating opportunities for young people to learn valuable skills for life is one of our four goals and we were thrilled to see 28 young people from our local charity partners working at The Championships. We look forward to expanding this initiative in 2022. Our Set for Success programme, run in partnership with the Youth Sport Trust, is helping young people facing challenges in their lives to develop life and leadership skills through sport and mentoring by world-class athletes.

We were proud to be recognised as a Living Wage Funder by Living Wage Foundation. This means we will support successful applicant charities to pay the real Living Wage to any grant-funded staff

posts and will work together with other funders to end low pay in the voluntary and community sector.

I would like to thank the Foundation team and our Trustees for their continued hard work and commitment and the All England Club and The Championships for their strong backing.

I would also like to thank the staff and volunteers at our charity partners who have been at the forefront caring for those in need in our communities. Your specialist expertise and dedication makes a huge difference to people facing the greatest inequalities. We are proud to support your important work.

Bruce Weatherill
Chairman
Wimbledon Foundation



OUR MISSION

Championing opportunity for all

The Wimbledon Foundation uses the collective strength of The All England Club and The Championships to make a positive difference to people's lives.

WHAT WE DO



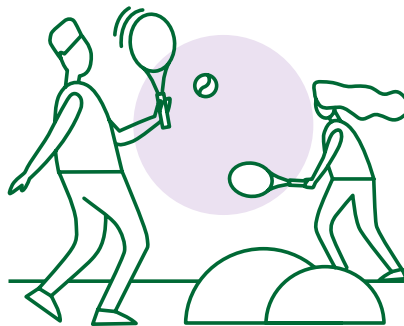
Respond in times of need

Making a difference to those facing adversity.



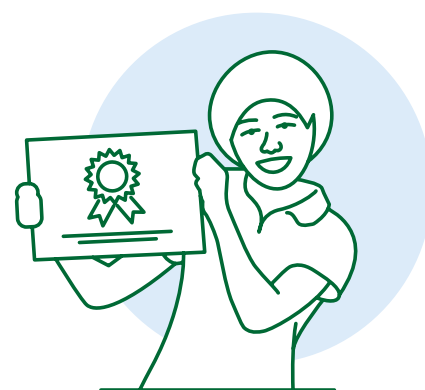
Strengthen our local community

Tackling social disadvantage in Merton and Wandsworth.



Promote healthy and active lives

Advancing good mental and physical health for all.



Inspire the next generation

Creating opportunities for young people to learn valuable skills for life.

WHO WE DO IT WITH

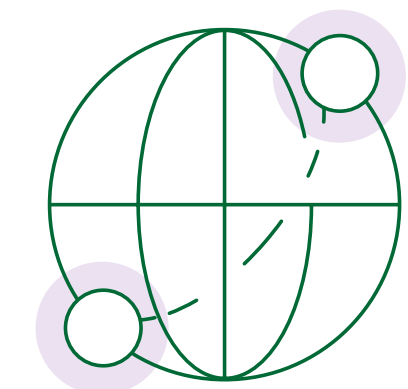
Local partners



National partners



International partners



HOW WE DO IT



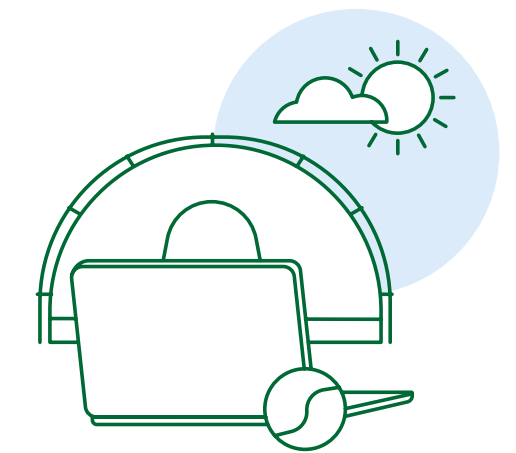
Programmes

We deliver programmes and projects.



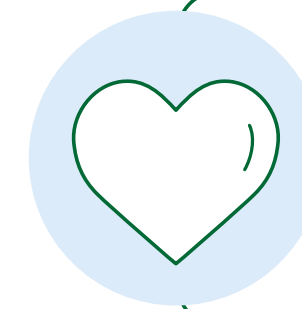
Funding

We provide grants and financial support.



In-kind

We donate resources such as physical gifts and use of facilities.



Ongoing support

We work collaboratively with our partners in our aspiration to be more than just a funder.



Inside

Summary of grants and donations awarded in 2020/21 >

RESPONDING IN TIMES OF NEED >

Coronavirus Fund >

A Roof for All >

Emergency Relief Fund >

Hot Meals Provision >

STRENGTHENING OUR LOCAL COMMUNITY >

Wimbledon Foundation Garden at Polka Theatre >

Arts & Community Engagement Fund >

PROMOTING HEALTHY AND ACTIVE LIVES >

Health & Wellbeing Fund >

Working with WaterAid >

INSPIRING THE NEXT GENERATION >

Wimbledon Junior Tennis Initiative >

Set for Success >

Working with Magic Bus >

Learning >

The Championships >

Ticket Resale Fund >

Planting a seed in the community >

The extra mile >

Finance, Trustees and Foundation Team >

Looking ahead to 2022 >

Supported organisations in 2020/21 >

KEY HIGHLIGHTS FOR 2020/21

No. of grants and donations awarded:

100

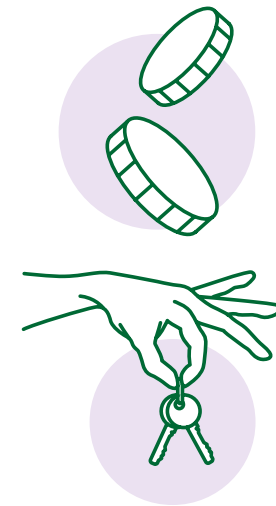
Value of grants and donations awarded:

£2,358,000

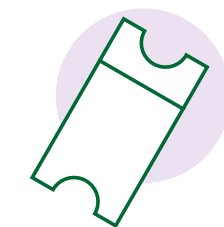
SUMMARY OF GRANTS AND DONATIONS AWARDED IN FINANCIAL YEAR 2020/21



Responding in times of need



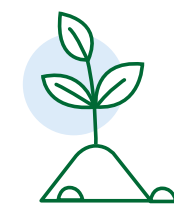
£100,000
Emergency Relief Fund



£136,000
Homelessness Fund



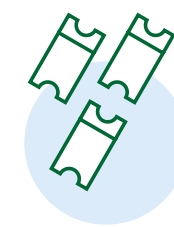
£1,219,000
Coronavirus Fund



£8,000
Arts & Community Engagement Fund



Strengthening our local community



£35,000
Ticket Resale Fund

Promoting healthy and active lives



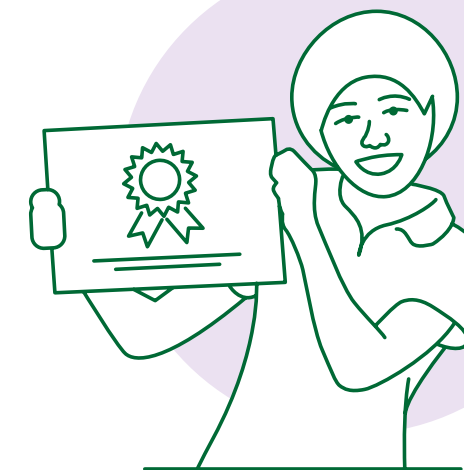
£200,000
Health & Wellbeing Fund



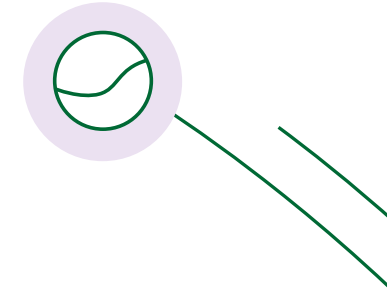
£238,000
WaterAid Partnership



£35,000
Ticket Resale Fund

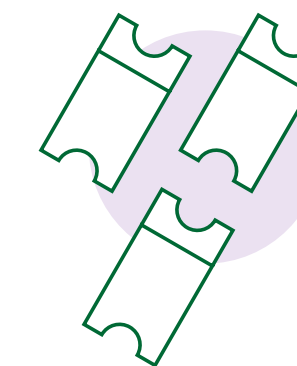
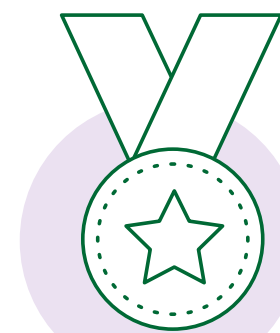


Inspiring the next generation

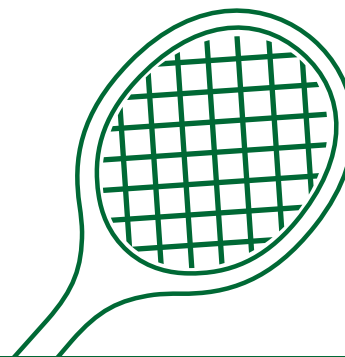


£97,000
Magic Bus Partnership

£62,000
Set for Success



£38,000
Ticket Resale Fund



TOTAL £2,358,000*

*Grant fund totals have been rounded to the nearest £1,000.



Responding in times of need

Making a difference to those facing adversity

Responding to COVID-19

The Wimbledon Foundation continued to place significant resources towards supporting those most severely affected by the pandemic including homeless people, disabled people, minority groups, older people and refugees.

During the financial year 2020/21, our Coronavirus Fund donated £1,219,000 across various appeals, predominantly focused on the local community but also towards national and international COVID-19 grants, taking the total amount donated by the Coronavirus Fund to £2m.



Coronavirus Fund giving by location during the financial year 2020/21

£679k	Merton & Wandsworth
£270k	London
£139k	National
£130k	International
£1.2m	TOTAL

*Figures have been rounded to the nearest £1,000.

HELPING OUR LOCAL COMMUNITY

Support for organisations in Merton and Wandsworth has been given in two ways: direct grants from the Wimbledon Foundation, and via the London Community Response Fund, a fund coordinated by a collaboration of more than 60 funders, administered on our behalf by the London Community Foundation.

Grants were targeted towards projects supporting under-represented groups and those addressing issues including food poverty, digital exclusion, isolation and youth employability. The Foundation also awarded grants to grassroots sports organisations helping them to restart after lockdown and to projects aimed at improving people's physical fitness levels.

Through our Coronavirus Fund:



21,500

people in Merton and Wandsworth have been supported



64,400

essentials/supplies packages have been delivered



29,350

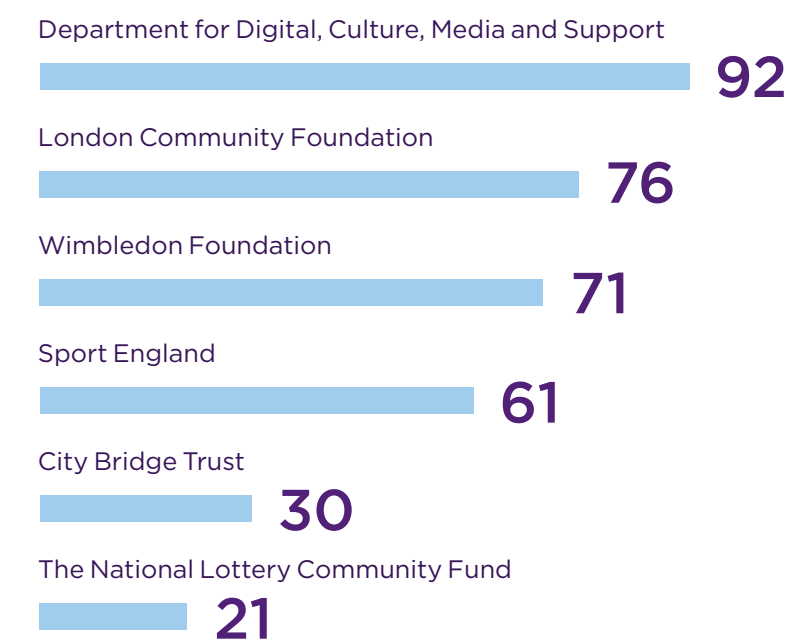
sessions of support and activities have been provided

Between April 2020 and July 2021:

- The Wimbledon Foundation was the third highest funder in Merton and Wandsworth in terms of number of grants awarded.
- When including grants awarded by the London Community Foundation on our behalf (55 grants), the Wimbledon Foundation was the top funder by number of grants awarded.
- This equates to around 40% of the total number of grants awarded.
- The Foundation reached around 50 organisations no other funder had.

Source: 360 Giving

Grants made by funder in Merton and Wandsworth:



Source: 360 Giving

GRANTS AWARDED TO MEET IMMEDIATE NEEDS:

Ace of Clubs

Towards support services for homeless people.

AFC Wimbledon Foundation

To provide food parcels, Christmas presents, laptops and other essentials for disadvantaged families across Merton and Wandsworth.

Age UK Merton

To deliver 200 Christmas hampers and run increased telephone befriending and online group activities over the winter.

Age UK Wandsworth

To provide items for Operation Christmas Cheer gift boxes delivered to more than 1,000 elderly residents.

City Harvest

Towards winter food provision in Merton and Wandsworth.

Fareshare

Towards winter food provision in Merton and Wandsworth.

Glass Door

Towards support services for homeless people.

Home-Start Merton

To extend their counselling service to families struggling with mental ill-health and to provide food vouchers for families at Christmas.

Home-Start Wandsworth

To support families through Festive Cheer parcels, an online Christmas party, food vouchers and warm outdoor clothing to encourage outdoor play.

Junction Community Trust

To provide supermarket vouchers to families in need over Christmas.

Merton Connected

Towards their capacity building work to launch a pilot quality mark for small charities.

Merton Giving

To provide support to voluntary organisations in Merton during the pandemic.

Providence House Youth Club

To deliver creative arts sessions for young people aimed at nurturing their creativity and developing their employability skills.

Rackets Cubed

To distribute 1,250 community boxes containing food, hygiene items and educational activities to families in need in Wandsworth.

Regenerate

To deliver more than 9,000 boxes containing food and essential supplies to families in and around Roehampton.

SPEAR

Towards support services for homeless people.

Spires

Towards support services for homeless people.

St George's Hospital Charity

To provide wellbeing boxes for staff.

Wandsworth Community Empowerment Network

To provide support to voluntary, community and faith groups in Wandsworth.



Grants to Wandsworth Foodbank and Rackets Cubed over Christmas enabled them to support more than 1,500 people with food provisions. Wandsworth Foodbank used the Foundation's funding to give families supermarket vouchers to supplement their emergency food supplies with fresh food and essentials such as cleaning products and school uniform.

One man, referred to the Wandsworth Foodbank when his wife became seriously ill and he was forced to take time off work to care for their young children, received a £50 supermarket voucher alongside his emergency food parcel. He said the voucher came at the time when new clothing was needed for the children and spoke of benefits to his overall wellbeing saying, "It was like a burden had been lifted."



GRANTS AWARDED TO IMPROVE PHYSICAL WELLBEING:

AFC Wimbledon Foundation

Towards summer schemes for young people from local schools and estates, providing sports, drama, arts and educational activities.

Anders Disability Badminton Charity

Towards the development of a new weekly pan-disability badminton session in Wandsworth.

ATTIC Theatre Company

Towards older people's online and in-person dance sessions.

Caius House

Towards a dedicated youth worker to deliver fitness and nutrition activities for young people.

Cardiac Exercise Club

Towards weekly online exercise sessions for people recovering from heart and lung conditions.

Carney's Community

Towards the delivery of six boxing mentoring sessions a week plus follow-up support for young people.

Deen City Farm

Towards a dedicated education officer to deliver a programme for the local community.

Disability Sports Coach

Towards outdoor inclusive sport sessions for disabled people in Wandsworth throughout the summer.

Enable Leisure & Culture

Towards summer and autumn physical activity provision on housing estates in Wandsworth.

Ethnic Minority Centre

Towards online yoga and Zumba sessions for older people.

FAST Project

Towards a dedicated youth worker to deliver a community youth programme including football and dance sessions.

Katherine Low Settlement

Towards a summer activity programme for young people from refugee backgrounds.

Linden Lodge Charitable Trust

Towards four sensory activity panels as part of a new play facility for children with disabilities.

Merton Vision

Towards a school holiday sports and activities programme for visually impaired children and young people.

Morden Little League

Towards a summer festival of football for children run with support from AFC Wimbledon coaches.

Parallel Youth Enterprise

Towards a summer camp including workshops, trips and sport for young people from disadvantaged backgrounds.

Paul's Cancer Support Centre

Towards a dance and emotional wellbeing project for women with cancer.

Quick Start Hockey

Towards their Return to Play hockey programme for children and families.

Rackets Cubed

Towards activities and food for young people in Roehampton.

Rackets Cubed and Roehampton Community Week

Towards a series of eight-week sports programmes and a tennis celebration event.

Share Community

For iPads for isolated adults with autism, learning disabilities and complex needs.

Sport4Health CIC

To support the running of the organisation.

Tennis for Free

Towards weekly free open access tennis coaching sessions.

+ **Parallel Youth Enterprise** works in partnership with the Metropolitan Police providing an extensive programme of activities benefitting young people and serving as a diversion from anti-social behaviour and crime. The Foundation supported the charity to run a summer camp in Wandsworth attended by 99 young people who enjoyed a range of activities from canoeing to circus skills. With 70% of the staff being police personnel, the camp provided a rare opportunity for young people and police to mix in a non-confrontational environment. 98% of young people said they enjoyed the camp and would like to return next year.

+ **Ethnic Minority Centre** used their grant to run online yoga and Zumba sessions for older members of the community during lockdown. One participant said, "The classes helped us to keep going forward. We are still alive and healthy. It was a good opportunity for us to see, share and talk with people while we were sitting at home."



GRANTS AWARDED THROUGH THE LONDON COMMUNITY RESPONSE FUND:

9th Southside Scout Group

Towards the provision of laptops for vulnerable children to participate in sessions and mental health training for leaders.

AFC Wimbledon Foundation

Towards October half-term activity schemes for young people in Merton and Wandsworth.

Battersea Arts Centre

To support 20 young people aged 15–25 to join a creative entrepreneurship programme and create Covid-relief social change projects for their communities.

Cedar House Support Group

Towards the delivery of group sessions for mothers experiencing postnatal depression and anxiety.

Citizens Advice Wandsworth

Towards a specialist caseworker to provide employment advice and casework support to marginalised and low-income residents of Wandsworth.

Commonside Community Development Trust

Towards running community care and support services teams.

Endeavour Club

To re-open the youth club for three weekly sessions and deliver maths and English tutoring sessions.

Food for Life Wandsworth

To run two 'healthy eating on a budget' courses for 30 people.

Generate Opportunities

To provide tablets, festive hampers and social events for people with learning disabilities.

Inner Strength Network CIC

Towards casework and coaching support for women who have experienced abuse.

JAGS Foundation

To fund a keyworker for a new virtual hub providing information for families and people concerned about violence affecting young people.

Junction Community Trust

To part-fund the salary of a lead coach for one year for their Spear programme, which equips young people with the confidence, motivation and vital skills they need to succeed in long-term employment.

Kunsaka

Towards the recruitment and training of 40 mental health first aid volunteers and a project worker to provide emotional and practical support to the Black Minority Ethnic elders, living in London, as well as wellbeing activities and hot meals for older people.

Learn to Love to Read

To adapt their early years literacy support services for digital delivery.

Merton Centre for Independent Living

To provide administrative support for six months to help with the increased demand for their services and to review the impact of the pandemic on deaf and disabled people.

Merton Mencap

To run a fortnightly forum for family carers of people living with learning disabilities.

Mother and Child Welfare Organisation

To provide support for vulnerable adults and young people from Somali backgrounds in Wandsworth, especially on the Alton Estate in Roehampton.

Naz Legacy Foundation

To deliver a 12-month community outreach diversity programme, online and face-to-face for young people from minority backgrounds.

PCC of St Michael and All Angels with St Stephen

To provide Christmas lunch and gifts for 150 vulnerable families in Merton and Wandsworth.

Regenerate-RISE

To expand their outreach services for 500 older people across Wandsworth helping to improve wellbeing and offering advice and signposting.

Royal Trinity Hospice

To fund specialist community nurse support for up to 30 people through home visits and telephone support for one month.

Sen Talk CIC

To provide counselling support for 15 families with children with autism or attention deficit disorders.

South West London Law Centres

Towards the salary of a crisis navigator and a small fund to support the immediate needs of those in crisis.

Sustainable Merton

Towards food and the core costs of running the four community fridges across Merton for six months.

Tooting Community Kitchen

Towards food and running costs of providing food to those in need.



Unique Talent CIC

Towards the delivery of a media production course for young offenders providing rehabilitative mentoring and intensive employment support.

Uptown Youth Services

To deliver twice-weekly youth club sessions for 11–18-year-olds in Colliers Wood for six months.

Wandsworth Community Chaplaincy Trust

To provide additional smartphones for men leaving prison and resettling in London, increasing their access to digital services, reducing social isolation and helping maintain their support networks including their mentoring programme.

Wandsworth Community Empowerment Network

To identify and employ four people to be change agents within their own hubs and clusters.

Waste Not Want Not Battersea

To fund a centre coordinator to run a winter food sharing project for six months from three hubs across Battersea as well as delivering 200 meals to those in need on Christmas Day.



+ **Unique Talent CIC** used its grant to fund ‘Sport for life’, a media production course that gave 21 young people from disadvantaged backgrounds first-hand experience in making films as well as rehabilitative mentoring and direct referrals into employment opportunities within the media industry. Under the guidance of professional tutors, the young people interviewed a variety of sportsmen and women, including Olympians Andy Hodge, Tom Middleton and Jonny Searle.

Janaina’s Story

Each year, 90 young people aged 16–24 complete Junction Community Trust’s Spear programme with 75% of trainees still in training or employment a year later. Janaina from Clapham Junction completed the Spear programme online in 2020 and said, “The mindset that I was in, I felt like retail was all I could do. I thought ‘I can only get low-paid jobs and I can’t apply for anything else.’ I was in the fixed mentality of ‘this is the situation I’m in and this is how I’m going to live’. But on the Spear programme I was given confidence to expand my horizons; now I’m in the growth mentality and I am confident enough to apply for better paid jobs and apprenticeships. I know that even in a field I don’t know anything about, I can learn in the end. I can take control of that situation and change my future.”

**NATIONAL GRANTS**

The Foundation awarded Coronavirus Fund grants to a number of national charities focusing on the themes of mental health, youth employability and homelessness.

PLACE2BE

A grant of £77k was awarded to Place2Be towards ‘Mental Health Champions’, a free online training course designed to help teachers and staff be better equipped to support children’s mental health as well as their own mental health and wellbeing.

Place2Be’s target was to reach 50,000 school staff by the end of the 2020/21 academic year, but they reached this figure by May with staff from 42% of all schools in the UK signed up for the training. 98% of teachers said they would recommend the course to a colleague and 92% said the course has increased their capacity to lead a positive approach to health and wellbeing in their work in schools.

Glasgow teacher Shirley McGinty said, “I feel more confident in going back to school and addressing issues that have arisen during lockdown. I also feel better equipped and ready to help parents deal with issues that have resulted from a lack of social and emotional interaction.”

“”

We cannot thank the Wimbledon Foundation enough. Your generous support has allowed us to reach tens of thousands of teachers across the UK and equip them with a vital knowledge and understanding of mental health. Thanks to your support, we have been able to work towards our vision of all children and young people having the support they need to build life-long coping skills and thrive by building confidence and knowledge in schools to promote a better understanding of mental health and wellbeing.

CATHERINE ROACH,
CHIEF EXECUTIVE, PLACE2BE



NHS CHARITIES TOGETHER

A donation to NHS Charities Together has helped provide support to NHS staff, patients and volunteers around the UK. Our support has helped to meet urgent needs such as providing electronic tablets for patients to stay in contact with loved ones and counselling support to protect the mental health of their staff and volunteers.

NHS Charities Together helped to create a quiet room for staff at the John Radcliffe Hospital in Oxford. Charge nurse Ray said, "The pandemic has restricted us in lots of ways – we can't hold patients' hands and they can't see we're smiling; if a colleague is upset, we can't hug them. As a manager, I worry about my team: whether they have the protection they need, and the emotional and psychological impact this could have on them. The charity helped transform our relatives' room into a comfortable, calm and inviting space where staff can relax and reflect. Sometimes that's all we need."

THE PRINCE'S TRUST

A grant of £50k was awarded to The Prince's Trust towards employability support for young people facing disadvantage across the UK.

The Foundation's funding enabled The Prince's Trust to:

- **support 26 young people through online 'Get Into' employability courses** – short online sector-specific courses, developed and run with employers, in which unemployed people aged 16-30 can improve their employability skills, develop their soft skills and improve areas like teamwork and communication.
- **provide 38 Development Awards** – cash awards to help young people tackle financial barriers that may be preventing them from accessing education, training or employment.
- **deliver 204 online mentoring sessions** for young people looking to build their skills and confidence so they can gain meaningful employment.



Corrina, from the West Midlands, is about to start her career in the NHS after completing The Prince's Trust 'Get Into Hospital Services' programme. "I cannot wait to start my placement. I've been unemployed for just over two years. The Prince's Trust programme has enabled me to increase my confidence, which will enable me to fulfil my dream of working in the NHS. I can't put into words how excited I am to put on the uniform and start getting the experience I need."



CRISIS

Building on our longstanding and ongoing support of homelessness charities in Merton and Wandsworth, the Foundation donated £270k to Crisis to fund six new roles as the charity refocused its services to meet the urgent housing needs of people leaving temporary accommodation or made newly homeless as a result of COVID-19.

Crisis' housing-led approach offers homes without condition, rapidly housing homeless people in sustainable accommodation and providing wraparound support according to people's needs to help them keep their home for good.

The Foundation's support of Crisis' rapid rehousing teams in London has so far helped 47 individuals leave homelessness behind for good and 303 people make progress on their journey out of homelessness.



Chris' Story

"I contacted Crisis Brent in June 2021. I had been struggling to cope mentally with my homeless situation and had been left feeling lost, confused and disillusioned from all of my previous dealings with local councils and authorities. Crisis provided me with a rapid resettlement worker who immediately helped me feel less lost. Crisis have managed to find me a beautiful, clean, safe home. It would be no exaggeration to say my intervention with Crisis has changed my general mental state and therefore my life. I will be eternally grateful to them and their wonderful caring staff members who I now regard as my friends."



INTERNATIONAL GRANTS

Recognising the global nature of the pandemic, we awarded grants to the British Red Cross Global Coronavirus Appeal, Magic Bus's emergency response to the Covid crisis in India and WaterAid's South Asia Covid Appeal.

A Roof for All

Funds raised by The No.1 Court Celebration held in May 2019 are providing three-year grants to four homelessness charities operating in Merton and Wandsworth.

This funding is targeted towards helping each organisation increase their capacity through investment in strategic personnel and digital systems meaning they are better placed to support vulnerable people off the streets and towards healthy and positive futures.

↑ 600 %

The number of new people sleeping rough in Wandsworth borough has risen over three years from 68 to 401.

Source: Combined Homelessness and Information Network (CHAIN)

The second year of core funding has enabled the charities to achieve the following:

SPEAR – continued investment in their systems, processes and reporting through a new database has enabled SPEAR to better report the needs faced by homeless people in the local community, and evidence their impact in delivering support. This has resulted in increased statutory and charitable funding allowing SPEAR to expand their team and cope with increased demand for their services. SPEAR supported 1,074 people from the Merton and Wandsworth areas.

Glass Door – their Service Development Manager, part-funded by the grant, has been integral in developing their new hostel service and adapting their shelters into a community dinner service when COVID restrictions required night shelters to close. Adapting their shelter administration system has enabled

Glass Door to better manage their waiting list and registrations and track guest outcomes. In total, Glass Door caseworkers met with 1,370 individuals; 199 individuals benefitted from the enhanced support of the hostel service; and 343 people received regular hot meals.

“ ”

The Wimbledon Foundation's grant towards our core costs has provided much-needed security and stability at a time when we have needed to be flexible and ready to adapt our services in response to the ever-changing challenges of COVID-19 and its related impact on individuals seeking our help.

LUCY ABRAHAM, CHIEF EXECUTIVE, GLASS DOOR



Ace of Clubs – a hot food takeaway service co-ordinated by their centre manager and director whose salaries are part-funded by the grant, provided 34,500 meals between August 2020 and July 2021. During the same period, emergency caseworking was provided to 1,479 clients, a charity log database has been purchased and a new volunteer application process implemented.

Spires – their new client management system and subsequent improved reporting has resulted in successful fundraising bids helping Spires to reach their income target in a challenging year. Spires supported 200 people from the Merton and Wandsworth areas.



Sophie's Story

Sophie, 18, is autistic and came to SPEAR's Young Person's Hostel in Merton after a breakdown of family relationships. Her keyworker Rosie encouraged Sophie to attend college more regularly and devised a work-out plan for them to do together to give Sophie structure and keep active during lockdown. Rosie supported Sophie to join Chelsea FC's disability football programme where she is now an active member. A year on, Sophie has moved into independent housing and in July completed her sports qualification at college.

Emergency Relief Fund

The Wimbledon Foundation's Emergency Relief Fund provides support to those affected by emergencies, both internationally and in the UK.

In 2020, the Foundation began a partnership with the British Red Cross supporting their Disaster Fund, which provides rapid relief to those affected by emergencies, and their Hardship Fund, created in response to the pandemic to provide support to those who are financially vulnerable.

In 2021, the Disaster Fund provided support to those affected by the devastating earthquake in Haiti and the crisis in Afghanistan. Red Cross staff and volunteers are providing humanitarian support on the ground and have supported more than 15,000 Afghan people arriving in the UK, welcoming people at airports, providing emotional support, warm clothing, soap, nappies, baby bottles and other essentials.

The Hardship Fund, which provided a safety net to those with no current access to income, savings or financial support, has helped more than 15,000 people with cash grants, much of which has been spent on food.

92%

of people reported feeling less stressed or anxious after receiving support from the Hardship Fund.

+ Biad, a father of four, lost his only source of income as a taxi driver during the first lockdown and was referred to the Hardship Fund for help. "We didn't know how we were going to carry on and this grant is just enough to allow me to get through...I was feeling desperate. This has made all the difference. Now we are okay."

In July 2021, the Foundation awarded a further £200k to the British Red Cross to be shared between their Global Coronavirus Appeal and the Disaster Fund.



Hot Meals Provision - Serving Our Local Community

In May 2020, the All England Club's Wingfield Kitchen began producing hot, nutritious meals for those most in need within Merton and Wandsworth. As the need for this service only increased, the Foundation helped support the operation until June 2021.

Over the course of the year, more than 30,000 meals were prepared by the Food & Drink at Wimbledon team and distributed by City Harvest to 35 local organisations and community groups caring for the most vulnerable in our community.



Wimbledon is a brilliant example of a creative solution to give back that has emerged during this crisis. The AELTC's commitment to providing the highest quality food to those who are struggling and your decision to continue the meals well beyond the initially agreed upon date has made an enormous impact. It is a brilliant partnership, one that we are very proud to be part of and one that makes lives better throughout London.

LAURA WINNINGHAM OBE, CO-FOUNDER, CITY HARVEST



Strengthening our local community

Tackling social disadvantage in Merton and Wandsworth

Wimbledon Foundation Garden

A new multi-sensory garden funded by the Wimbledon Foundation was unveiled at Polka Theatre in September as it reopened after a two-year redevelopment project.

Designed by Patrick Collins, an award-winning landscape architect and garden designer, the Wimbledon Foundation Garden features a new creative play area for children and sensory planting that will enhance the theatre's extensive Access Programme for children with disabilities and learning needs. Ecological elements of the design include bug hotels, log piles and bird and bat boxes.

In addition to the Foundation's funding, members of the AELTC's estate development and horticultural teams were involved in the project lending their expertise, planting trees and flowers donated from The Championships, and leveraging in-kind support from suppliers.

The garden was officially opened by AELTC Chairman Ian Hewitt and Peter Glanville, Artistic Director and joint CEO of Polka Theatre.



“”

Thanks to the support of the Wimbledon Foundation, we have transformed a previously neglected garden into a safe and fully accessible green space that everyone is welcome to enjoy for free. This amazing new play space will greatly enhance Polka's educational programmes with creative learning workshops, storytelling and messy play trails to connect children with the outdoors in a creative way.

PETER GLANVILLE, ARTISTIC DIRECTOR
AND JOINT CEO OF POLKA THEATRE



Arts & Community Engagement Fund

Baseless Fabric Theatre, a Merton charity that brings opera and theatre directly into public spaces, has been awarded a further grant to support its work in schools in Merton and Wandsworth.

Based on their new adaptation of Carmen, Baseless Fabric is running a series of music and drama workshops in local primary and secondary schools aimed at inspiring young people's interest in singing and performing opera in a fun and accessible way.

Feedback from the schools has been extremely positive with:

99%

of students saying they liked the workshop and

81%

saying they loved it.

Baseless Fabric Theatre, in partnership with local charity Jigsaw4u, is also working with children from a local primary school to put on their own production of Carmen and running a skill-sharing session for workshop leaders from minority backgrounds as a way of improving diversity within opera.

In the autumn of 2020 and spring of 2021, the Foundation supported Baseless Fabric Theatre to run a series of opera concerts in the gardens and car parks of local care homes helping to lift residents' spirits.





Promoting healthy and active lives

Advancing good mental and physical health for all

Health & Wellbeing Fund

Our Health & Wellbeing Fund has supported nine charities with funding of £600,000 over three years towards projects that improve the health and wellbeing of local residents.

During the pandemic, our Health & Wellbeing partners have provided support above and beyond the scope of their usual work, adapting to the needs of their clients and demonstrating great innovation in how they continue working with their beneficiaries.

10 million



An estimated **10 million people** (8.5 million adults and 1.5 million children and young people) in England will need support for their mental health as a direct result of the pandemic over the next three to five years.

Source: Centre for Mental Health.



Across southwest London, demand for children and young people's mental health services continues to grow and acuity is more complex, particularly post COVID-19.

Source: South West London Clinical Commissioning Group.

1 CARAS (Community Action for Refugees and Asylum Seekers)
 CARAS is a community outreach charity that supports people of refugee and asylum-seeking background who live in south-west London. Their project is providing tailored support for refugees and asylum seekers who are in care or are care leavers, including financial literacy, mental health and wellbeing support, and routes to employment.

CARAS supported **171 care leavers** with individual casework, including: mental health and wellbeing support, housing issues, Home Office correspondence, accessing education and ESOL.



2 Catch22

The overarching goal of Catch22's project is to reduce the use and impact of substances on individuals and the wider community by supporting young people aged 24 and under. Catch22 is delivering school-based counselling aimed at children and young people aged 11-16 who have been identified as requiring a one-to-one intervention for a range of emotional health issues and/or as part of dealing with the impact of substance misuse in their family.

3 Community Drug and Alcohol Recovery Services (CDARS)

CDARS aims to improve the lives of vulnerable people by providing psychological, emotional and practical support to people experiencing substance misuse and those experiencing or at risk of mental health crisis. The Culture + Diversity = Cohesion (CDC) Programme is delivering a series of events open to the local community as well as weekly activities in the Sunshine Recovery Cafe to showcase the talent of customers, to improve their wellness, to celebrate culture and diversity, and to lift the stigma of mental health by bringing people together.

CDARS supported **192 people** through online and in-person health and wellbeing sessions. **96%** of participants reported feeling less isolated and **91%** reported feeling more positive.

+ When the pandemic began, CDARS set up a Community Kitchen preparing and delivering nutritious meals to their most vulnerable and isolated clients. One man said, "Volunteering at the Community Kitchen motivates me in my recovery every day and gives me a lot of confidence. I will always help those in need as I know how it feels and I can't think of a better way to do it than providing a meal cooked with love and pride for someone who really needs it."



Saima's Story

The Foundation awarded two Coronavirus Fund grants to Merton Vision to support their emergency provision work and fund a specialist visually impaired counsellor for their members.

Saima, 52, was introduced to Merton Vision in 2013 after being certified as severely sight impaired (blind). Merton Vision has supported Saima in multiple ways including mobility long cane training, benefits and financial advice, adapting lighting in the home, as well as providing volunteers to help with walks to the local park and shops. With the help of her husband and Merton Vision's support,

Saima's independence and confidence dramatically improved and she joined a local swimming group and took up pottery lessons and flower arranging.

In April, Saima's husband passed away from COVID-19. Merton Vision arranged for Saima to meet a specialist counsellor who being visually impaired herself, has dealt with the same issues around sight loss. Saima says, "Merton Vision has been such a great support. After my husband died it was all so difficult. My counselling sessions are really helpful, my counsellor really listens to me."

4 Free2B Alliance

Free2B Alliance supports young people who identify as LGBTQ+ and their parents by empowering them to work collaboratively to deliver awareness training and challenge homophobia, biphobia and transphobia. Their project is providing one-to-one mentoring support to LGBTQ+ young people via Merton and Wandsworth secondary schools as well as within the community creating positive social connections and improving the emotional wellbeing of LGBTQ+ young people.

Free2B set up a weekly online wellbeing group supporting **35 young people**. **96%** felt they now have a wider support network and are part of a community.

5 Merton Vision

Merton Vision provides support and services to people living with visual impairment and sight loss in Merton. A designated support worker is engaging younger people of working age who have lost their sight by providing one-to-one meetings to identify individual needs and supporting individuals to access coaching, counselling, life and employment skills, mobility support, specialist IT equipment and social groups.



6 Off the Record Youth Counselling

Off the Record provides free, professional support to young people in Merton, Croydon and Sutton. The project provides face-to-face and online counselling and a weekly mental health drop-in for 18–25-year-olds in Merton, tackling a gap in mental health services provision.

Off the Record supported **160 young people** with one-to-one counselling sessions, **57% of whom are from minority backgrounds**. They also developed a 'Coping with Covid' resource hub on their website offering mental health information and support to help young people cope during the pandemic.

7 Regenerate

Regenerate works with young people and families in Roehampton and estates across London, helping transform lives and communities from the inside out. Their Get Focused mentoring programme is supporting disadvantaged young people aged 11–18 to grow in confidence and improve their emotional and social capabilities by listening to them about their lives, providing role models and opportunities for personal development.

+ Regenerate moved their individual and group mentoring work outdoors in order to keep delivering the service consistently. The young people enjoyed learning to make fires and to cook outdoors and, most importantly, were able to access face-to-face mentoring safely. Clare Smith, Service Lead at Regenerate, said: "One of the young people who was identified as a vulnerable child and has safeguarding issues at home, spent mentoring sessions cooking with her mentee. Together, they discussed recipes she wanted to learn, and have made these dishes together whilst talking. Cooking together has helped her to talk more freely in a more relaxed environment whilst also teaching her life skills and nurturing the creativity in her. This has been a really positive experience for her and a great escape from some of the pressures she is facing at home and school."



8 Wandsworth Community Empowerment Network (WCEN)

WCEN aims to identify and support local community networks to be part of public service decision-making forums and to become active co-producers of services most needed by communities. Through a programme of creative workshops and links to opportunities in the community, black and minority ethnic young people will develop core life skills such as confidence building, self-esteem, advocacy, financial management and self-care.

9 Thrive (Society for Horticultural Therapy)

Thrive uses gardening to bring about positive changes in the lives of people living with disabilities or ill health, or who are isolated, disadvantaged or vulnerable. Thrive's Social and Therapeutic Horticulture Programme is enabling those living with life-changing health conditions and disabilities to experience the joy of gardening, build new friendships and increase social networks, and build confidence to regain or maintain an active, healthy and independent life.

+ Nicholas, pictured on the left at The Championships 2019, suffered a life-changing stroke the day after turning 56. After a lengthy stint in rehab, he regained limited movement and speech and was referred to Thrive's Life Changers programme. While gardening has helped to improve his fine motor skills and dexterity and strengthen his limbs, it was the social interaction that proved invaluable. Nicholas said, "The stroke greatly affected my confidence and left me very isolated but the friendliness and encouragement of my fellow gardeners, staff and volunteers at Thrive has been a massive help." Nicholas now volunteers at Thrive selling plants to the public from their winter garden in Battersea Park.

100% of Thrive's clients reported an improvement in their mental health through a sense of achievement.

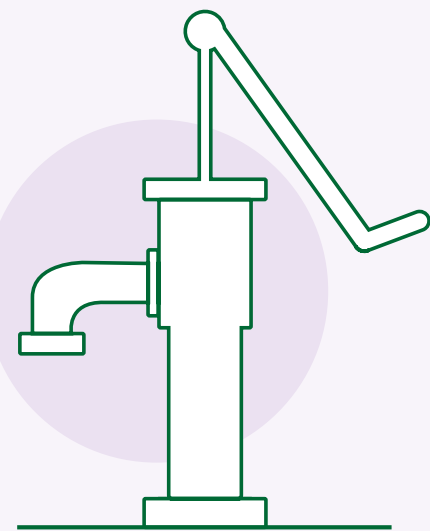


Working with WaterAid

The new phase of the Wimbledon Foundation's partnership with WaterAid focuses on health, and in particular on transforming healthcare facilities where presently one in four globally do not have clean water on site.

A grant of £1.2 million awarded over three years is enabling WaterAid to install clean water, sanitation and hygiene (WASH) facilities at healthcare centres in Ethiopia, Madagascar and Malawi. The installation of WASH in Malawi's Ntchisi District Hospital alone will lead to improved health outcomes for more than 300,000 people.

The Foundation's support is also enabling WaterAid to carry out research and develop guidance and training resources on the relationship between WASH and Infection Prevention and Control (IPC). The ambition is that these training materials will increase knowledge and understanding of WASH for IPC amongst professionals involved in setting up and maintaining WASH in healthcare facilities thereby improving the quality of care received by people around the world.



Despite the challenges presented by COVID-19, significant highlights from supported projects during the year include:

- the completed construction of water supply systems at two healthcare facilities in Ethiopia benefitting 50,000 patients and 54 medical staff.*
- the construction of the large water infrastructure components in Manjakandriana, Madagascar which will bring clean drinking water to more than 12,000 people.
- newly built toilet blocks and water supply systems at primary schools in Ethiopia and Madagascar giving staff and students access to clean drinking water and handwashing facilities.
- 100% of medical staff in three healthcare facilities in Malawi having necessary PPE.

*In Ethiopia the project is part of a consortium programme for sustainable WASH, also funded by the Conrad N. Hilton Foundation among others and convened by the Millennium Water Alliance.





When Elisa had her first baby, there was only one toilet at the Manjakandriana health centre in Madagascar which posed major health risks to patients and staff. As a result of our partnership, there are now decent toilets and handwashing facilities at the health centre, which are helping to prevent the spread of disease and allowing babies to be brought into the world safely.



As a midwife working at the Nkhuzi health centre in Malawi, Zelifa was always concerned about the dilapidated toilets providing adequate safety and privacy for expectant mothers. Supported by our partnership, the construction of new toilets, bathrooms, placenta pits and an incinerator has almost been completed and Zelifa is excited about the impact this will have on her and her colleagues' work. She says expectant mothers will be more likely to access care and "most importantly, hygiene at the facility will improve".



To highlight the importance of access to clean water on children fulfilling their potential, WaterAid created a series of glass droplets containing children's dreams gathered from around the world, including the dream of two members of the WJTI, Annabel Everett-Williams, 7 and Ysehult Patrick, 14, to play on the grass at Wimbledon.

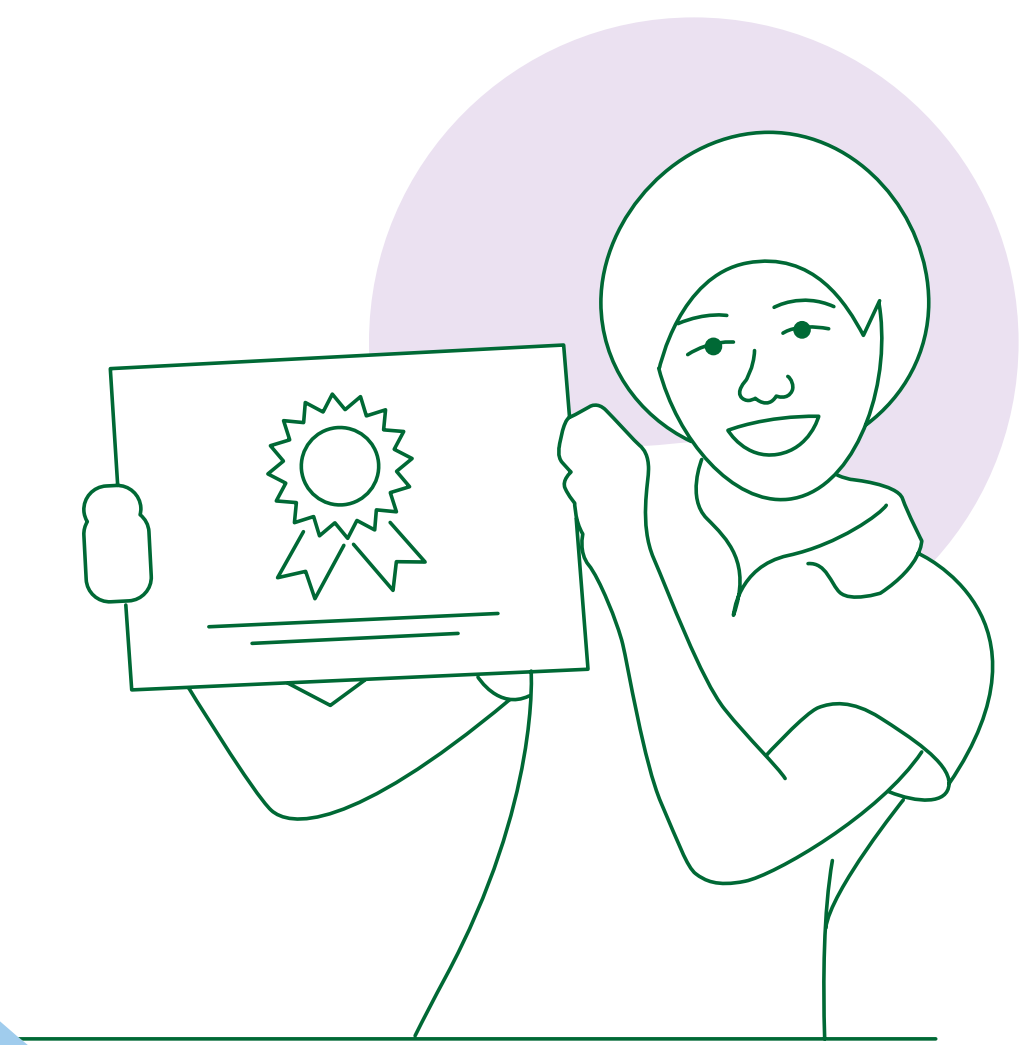


Fifteen-year-old Tsehaynesh, pictured left, from Ethiopia dreams of being a midwife. She used to spend hours every day collecting water before WaterAid installed three water points in her community. "I'm never late for school now. Together, clean water and good hygiene will help me fulfil my dreams."



WATCH OUR VIDEO 'IT ALL STARTS WITH A DREAM'





Inspiring the next generation

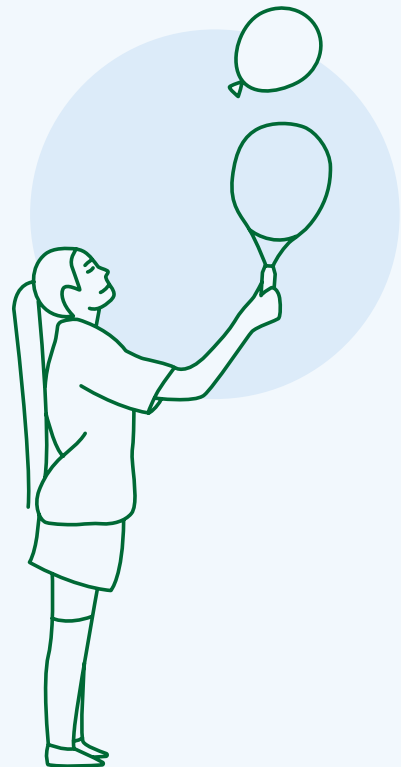
Creating opportunities for young people to learn valuable skills for life

Developing Young Players

The Wimbledon Junior Tennis Initiative (WJTI) celebrated its 20th anniversary in 2021. Over twenty years, the AELTC coaching team has introduced more than 215,000 children to tennis through weekly visits to state primary schools in Merton and Wandsworth.

Those who show the most potential and enthusiasm are invited to attend free weekly training sessions learning to play tennis as well as the life skills and values sport brings such as teamwork, discipline and fairness.

With restrictions in place for much of the 2020/21 academic year, the WJTI adapted its regular model and instead WJTI coaches visited 12 state primary schools in Merton and Wandsworth weekly for a six-week period teaching tennis skills and improving fitness levels through fun exercises.



Josh's Story

Josh was 11-years-old when the WJTI visited his primary school in Merton. He was invited to attend free tennis coaching at weekends at the All England Club and went on to train with the WJTI squad. This built the foundation for Josh's competitive career, helping him to earn a scholarship to play university tennis for Bournemouth.

As his WJTI journey progressed, Josh became increasingly engaged in helping to coach the younger children on the programme. The WJTI supported Josh with his development as a coach up to LTA Level 3, which opened the door to his career in tennis coaching running Teddy Tennis.

Josh says, "I often wonder which way my life would have gone had my parents been busy on that first WJTI weekend invitation. The WJTI has definitely had a big and positive impact on me. Tennis is such a great sport and it is good to see a club that holds an international sporting event actively seeking to create and develop participation opportunities for the local community. I have seen friends from the WJTI and a number of the children we have taught go on to build careers around tennis."

Set for Success

The closure of schools meant a challenging first year for Set for Success, the Foundation’s new national programme run in partnership with the Youth Sport Trust. However, with 46% of pupils surveyed by the Youth Sport Trust as part of the programme feeling that COVID-19 has negatively impacted their future job or education prospects, Set for Success could not have launched at a more crucial time.

Set for Success is a two-year personal development programme that uses sport and mentoring sessions led by world class athletes to improve the wellbeing and future opportunities of vulnerable young people.

There are currently 14 schools across the UK participating in the programme and each young person has the opportunity to gain an accredited qualification at the end of year two.

62% of participants are on free school meals (FSM)

33% of participants have special educational needs (SEN)

20% of participants are from minority backgrounds

 **WATCH OUR VIDEO ‘SET FOR SUCCESS’**

“
Set for Success is about teaching the mindset of an athlete, to help young people get set for success in life. Our experienced athlete mentors are helping young people to think and act like an athlete, believe in their ability and be ready to achieve whatever they set out to do.
EMILY REYNOLDS,
NATIONAL PROGRAMMES DIRECTOR, YOUTH SPORT TRUST



+
A group of year 11 students taking part in Set for Success at The Bulwell Academy in Nottingham have launched a mental health awareness campaign through the initiative. Seeing the detrimental impact of the pandemic on young people’s mental health, the students have created information leaflets on where to access help and are planning a series of assemblies.



“
Our campaign will help us all to gain a better understanding of the feelings we all experience on a day-to-day basis. Talking to friends is important to keep your mind positive and off all the negative things going on. Another way is playing sport. Sport is an amazing way to keep your mind off the negatives and focus on the positives and that’s why I think this project is important.”

HARVEY, YEAR 11 PUPIL AT THE BULWELL ACADEMY

Working with Magic Bus

Since 2015, the Foundation has been supporting Magic Bus, a charity that works with children and young people in India taking them on a journey from childhood to livelihood and out of poverty.

Magic Bus mentors work with 3,250 children from underprivileged communities in Delhi using a tennis-linked curriculum to deliver positive messages on the importance of staying in education, good hygiene and gender equality. The Magic Bus Livelihood Centre in Nangloi, Delhi helps young people between the ages of 18 and 25 to identify their aspirations and develop the hard and soft skills necessary to achieve them.

A second wave of coronavirus infections devastated India in the spring of 2021 and affected everyone in the Magic Bus family from staff and volunteers to the children, young people and families they work with. In response, the Foundation contributed to Magic Bus's emergency COVID-19 appeal to

help save lives in the communities they serve. A donation of £15k helped Magic Bus to source oxygen concentrators and cylinders and to provide medication, medical consultations and vaccinations to those most in need of medical care.

Magic Bus staff continued running sessions virtually where possible and have played a role in providing education and encouragement for take-up of the vaccination amongst the families they work with. 156 young people completed the Livelihood programme during the year with 96 securing jobs so far. Magic Bus has also been supporting former students who have lost jobs due to the pandemic, focusing their efforts on maximising the new opportunities in logistics and IT.

Khushbu's Story

Khushbu, 19, enrolled in the Magic Bus Livelihood programme after her father lost his job due to lockdown and poor health issues. The programme helped Khushbu to develop essential life skills including time management and goal setting, as well as connecting her to employers and preparing for interviews. Khushbu has successfully secured a position at Delhi Civil Defence Society significantly increasing her family's household income.



Learning

The pandemic saw the closure of the Wimbledon Lawn Tennis Museum and visits and tours put on hold from March 2020 until July 2021. The Learning team used this time to develop new ways of sharing the history and heritage of Wimbledon with audiences of all backgrounds, ages and abilities.

School loan boxes

Three new loan boxes have been created bringing a slice of Wimbledon history into classrooms throughout local boroughs and beyond. Each curriculum-based loan box provides an immersive and multi-sensory experience through genuine and authentic objects taken from the Museum Collection.

Digital Learning

The Learning team collaborated with long-standing partner, De Montfort University, and its FIFA sports management course in developing virtual lectures for students during lockdown. The sessions included the popular 'The Business of Wimbledon' lecture, which covers elements such as the brand, broadcasting, Official Suppliers and more.



Families

As part of a continuous effort to make Wimbledon more family-friendly year-round, the Learning team launched the Museum's first ever multimedia adventure for families. During the journey, families get the chance to invent their own sport, create a signature Wimbledon ice-cream, and even mow the world-renowned Centre Court grass. There is also the chance to meet some famous faces along the way, including Sir Andy Murray and Jordanne Whiley MBE.

Community

The Learning team continue to connect with and work alongside community partners to build sustainable relationships, generate opportunities, and create inclusive experiences year-round. Learning provides opportunities for community groups to visit the Museum and Grounds, and offers new learning opportunities via workshops and arts projects, and by delivering outreach sessions in Merton and Wandsworth.

COMMUNITY ART PROJECT

A grant was awarded to Providence House Youth Club, a youth centre that provides community and opportunities for young people living in Battersea, to deliver creative arts sessions aimed at nurturing young people's creativity and developing their skills to help them find their way into the workplace. Working with local artists and creative practitioners, the young people went on to produce a music video, photography exhibition and a soundscape.

The music video, created with support from local video producer Glen Morgan Shaw and videographer, Sandra Munoz-Alvarez, is for an original song titled 'Beyond All Limits'. Written by Providence House's Director, Esther Clevely, the song is all about overcoming personal struggles and was performed by talented young singers and dancers from Providence House. The video celebrates the way in which the local community in Battersea has come together to support each other during the challenges of the past year and looks to a more hopeful time ahead.



WATCH THE VIDEO

The soundscape, titled 'Sights and Sounds of Providence House' is a collaboration between the composer, Pim Jones and photographer Nick Cornwall. Working with young people at Providence House, the two created the soundscape and images, which capture the energy and spirit of the young participants. Through a combination of recorded sounds of activities taking place at the youth club, alongside anecdotes about Providence House, the piece showcases the positive influence and impact the youth club has had on the local community over the past fifty years.



WATCH THE VIDEO



The Championships

The Foundation welcomed 200 guests from 57 charities and community organisations to The Championships in recognition of all they have done during the pandemic. Guests included volunteers from the British Red Cross and City Harvest London, staff from local charities including Wimbledon and Wandsworth Foodbanks, and homeless people supported by Crisis and Glass Door.



“ ”

I cannot thank you enough after what has been a very stressful and hard year with all of our service users being shut at home and trying to support them. Yesterday I just sat back and relaxed for the first time in many months and enjoyed every minute. It was perfect. I don't know how to thank you.

FRANK COLLEY, LEONARD CHESHIRE DISABILITY

“ ”

It's so exciting that our community members are working at The Championships - it's such a clear example of all the ways this funder relationship goes way beyond into a shared community effort."

PETER TARGET, DIRECTOR OF OPERATIONS, CARAS (COMMUNITY ACTION FOR REFUGEES AND ASYLUM SEEKERS).



CREATING OPPORTUNITIES FOR YOUNG PEOPLE

Leveraging the resources of the Club and The Championships, the Foundation worked with the AELTC's HR department, to identify 12 charity partners in Merton and Wandsworth working with young people from diverse backgrounds and invited those young people to apply for roles at The Championships.

Each applicant was guaranteed an interview and all unsuccessful applicants received personalised feedback to provide them with valuable experience and to help them with future applications. In total, 35 young people applied with 28 securing retail and court assistant positions.



+

Shaniah Williams from Wandsworth Community Empowerment Network worked in the Wimbledon Shop and said, "Wimbledon will definitely be seeing me again. I feel a sense of belonging. I remember before I started work, I was slightly nervous, but I was so welcomed by everyone. Working at Wimbledon has really helped to build up my confidence and people skills."

CHAMPIONING YOUTH MENTAL HEALTH

Providence House Youth Club and Off the Record Youth Counselling were nominated by the Wimbledon Foundation for the coin toss ceremonies in recognition of the outstanding support both charities have provided to young people during the pandemic.

Britley Fenning, aged 15, performed the coin toss at the Ladies' Singles Final representing Providence House Youth Club. At the Gentlemen's Singles Final, 13-year-old Sean Seresinhe performed the coin toss representing Off the Record, a youth mental health charity supported by the Foundation's Health & Wellbeing Fund, which provides free, professional support to young people aged 11-25 in Merton, Croydon and Sutton.



WATCH BRITLEY'S STORY



WATCH SEAN'S STORY

“”

I think we could all see how much it meant to Sean and hopefully his enthusiasm also sent a positive message to other young people about the possibility of recovering from mental health challenges.”

KAREN STOTT, DIRECTOR, OFF THE RECORD



THANK YOU TO



HSBC for donating **£100k** in lieu of match funding the Ticket Resale scheme.



Keith Prowse Hospitality for donating **£5 for every hospitality package** sold to The Championships generating £42k.



Ralph Lauren for donating **20%** of the net purchase price of items in their 2021 Wimbledon capsule sold during The Championships raising £60k.



Ticket Resale Fund

The Ticket Resale scheme, one of Wimbledon's much-loved traditions, was unable to take place at The Championships 2021.

However, the Foundation continued to make donations to local and national causes supported by the Ticket Resale Fund including: winter night shelters run by YMCA London St Paul's Group in Merton and Glass Door in Wandsworth, the Mayor of Merton's Charities and the Mayor of Wandsworth's Charities, Fields in Trust, Give It Your Max, IC Philanthropy Foundation, Mitcham Town Community Trust, Queen Elizabeth's Foundation for Disabled People, Tennis First, and The Dan Maskell Tennis Trust.

Donations were also made to ABF The Soldiers' Charity, the Metropolitan & City Police Orphans Fund, the Royal Air Force Benevolent Fund, the Royal Navy and Royal Marines Charity, and The Fire Fighters Charity.

- + Young people from the RAF Benevolent Fund's Airplay project enjoyed a day out at Wimbledon in August including a tennis lesson with the AELTC coaching team and a learning session in the Wimbledon Lawn Tennis Museum. Airplay supports children aged 8-18 growing up on RAF bases around the UK and during the pandemic used their donation from the Ticket Resale Fund to develop a new digital platform to keep children connected and in touch with Airplay youth workers.



“ ”

The smiling faces say it all! Thank you for your enduring support of the Airplay project. Grants like this help to give us the security we need to continue providing vital support to young people growing up within the RAF Family.

JASON SHAUNESS, RAF BENEVOLENT FUND



Planting a seed in the community

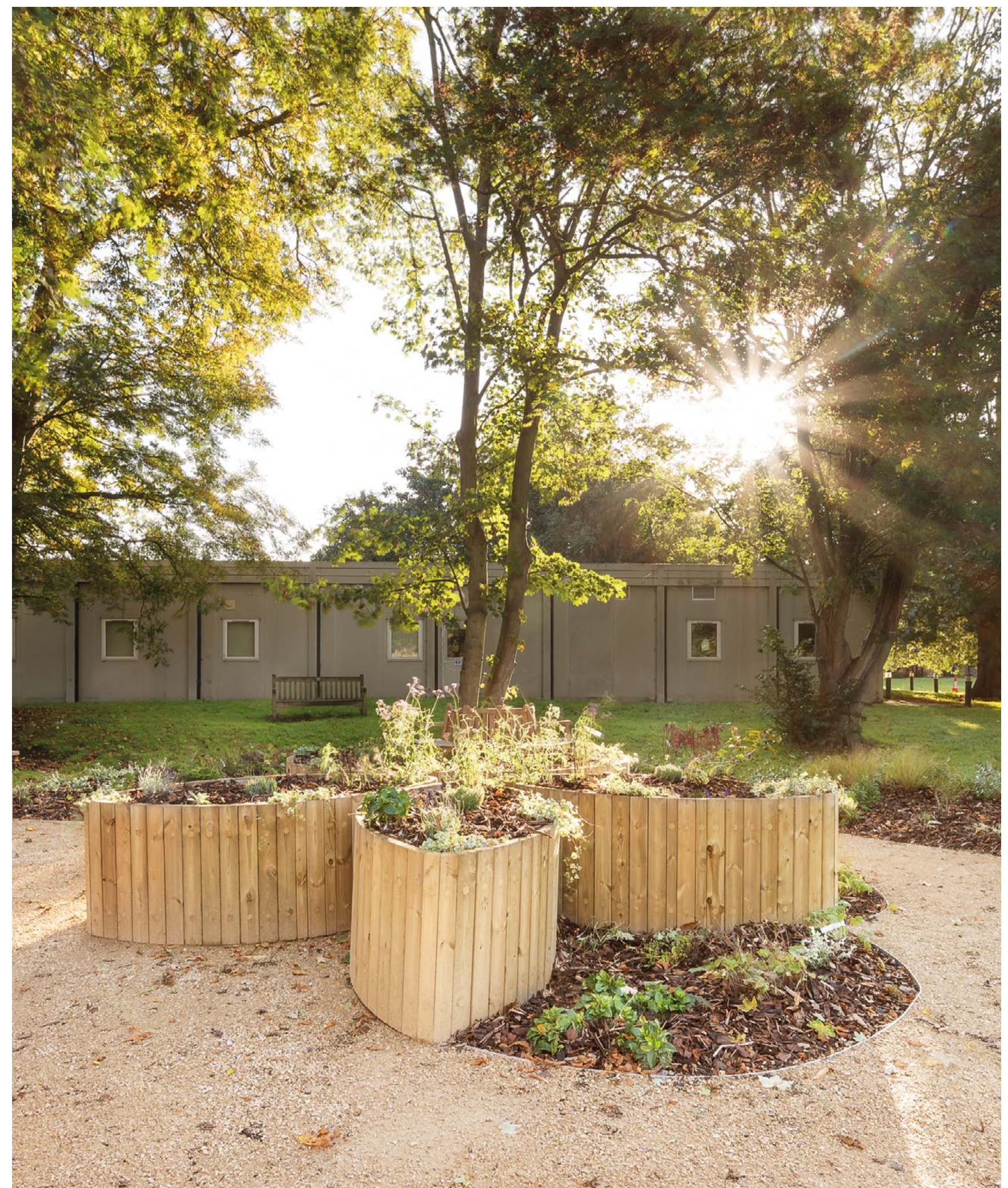
More than 5,000 plants from The Championships were donated by the Foundation to charities and community groups in Merton and Wandsworth.

Community spaces have been transformed by planting thanks to the Doddington & Rollo Community Association, Merton Garden Streets, Richmond & Wandsworth Council, Southfields Green the Grid, Sustainable Merton and Waste Not Want Not Battersea.

Groundwork London worked with the NHS Estate team & NHS social prescribing teams in Merton launching a project to improve planting on the Wilson Hospital estate pictured opposite. Garden areas at St George's Hospital and St Raphael's Hospice have also been improved as have guest areas at homelessness charities Ace of Clubs, SPEAR and Spires.

The plants have helped to brighten the offices of Wandsworth Community Empowerment Network; classrooms at Cranmer Primary School; and the garden areas of Age UK Merton, Deen City Farm, Linden Lodge School and Jigsaw4u.

Age UK Wandsworth and Association for Polish Family gave plants as gifts to elderly residents while others found new homes at May Project Gardens, Thrive, CDARS, Share Community's nursery, the Tooting Transition Town Community Garden thanks to CARAS and the community garden at Phipps Bridge Allotment thanks to Association for Polish Family.



The Extra Mile

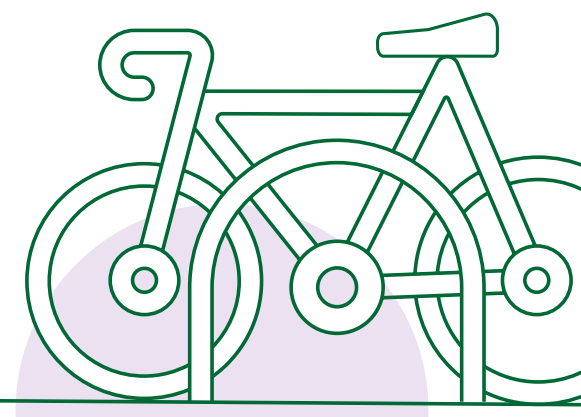
Beyond our grant programmes, the Foundation uses the resources of the Club and The Championships to help people in need in as many ways as possible.



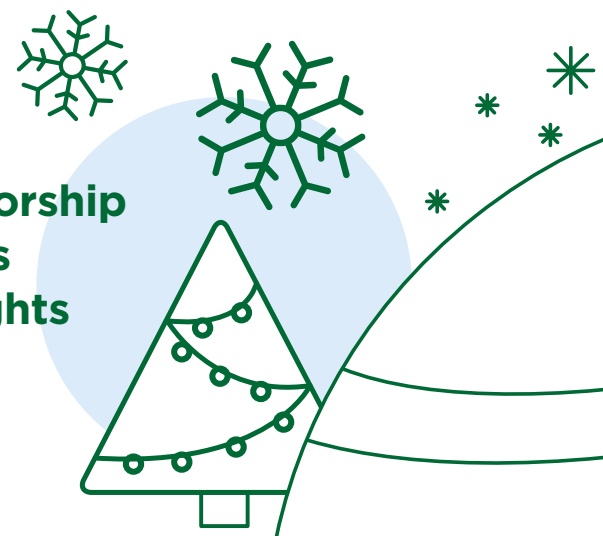
Clothing to the British Red Cross for their refugee services



Bespoke visits including children from the RAF Benevolent Fund's Airplay programme



AELTC sponsorship of new bike racks in Wimbledon town centre



AELTC sponsorship of Southfields Christmas Lights



Plants from The Championships to 26 local charities, hospitals and community spaces.



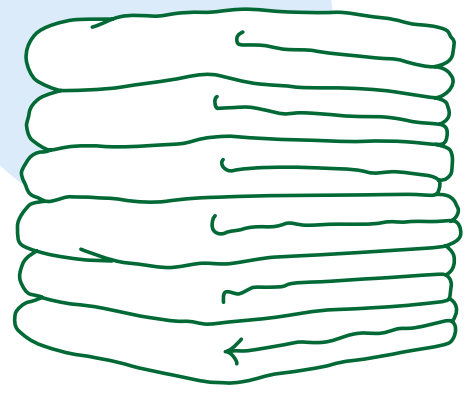
Nets from The Championships donated to courts in Merton and Wandsworth

Tennis balls to children's activity programmes run by AFC Wimbledon Foundation, Mitcham Town Community Trust and Rackets Cubed.

Clothing and Championships towels to local homeless charities including Ace of Clubs, SPEAR and Western Lodge.



Children's clothing to local charities including Home-Start Merton and Little Village



Prizes donated to UK-wide fundraising events



Finance

The Wimbledon Foundation is a charitable company limited by guarantee and its sole member is The All England Lawn Tennis & Croquet Club Limited ('the Club').

Incoming resources principally comprise donations from the Club and, on behalf of The Championships, The All England Lawn Tennis Club (Championships) Limited ('AELTC'). AELTC provides administrative, staffing and operational support to the Wimbledon Foundation without charge.

Support of the Wimbledon Foundation by the Club and AELTC is separate from and additional to the distribution of the large majority of the financial surplus from The Championships to the Lawn Tennis Association generally for the development of tennis at all levels in the UK.

The tables on the following page are not the statutory accounts but a summary of information extracted from the Foundation's Annual Report and Financial Statements 2021. The full statutory accounts were approved by the Wimbledon Foundation board of trustees on 23 September 2021 and Deloitte LLP issued an unqualified audit opinion thereon which did not contain an emphasis of matter or any statement under s496(2) or (3) of the Companies Act 2006. The full statutory accounts have been filed with the Charity Commission and a copy can be obtained from the Wimbledon Foundation, AELTC, Church Road, London SW19 5AE.

Trustees

The Hon. Bruce Weatherill (Chairman)
 Sir Keith Ajegbo
 Nick Bitel (Independent)
 Kevin Havelock
 Ian Hewitt (AELTC Chairman)
 Anne Keothavong MBE (appointed 3 March 2021)
 Sir Nicholas Young (Independent)

Foundation team

Martin Guntrip, **Club Director**
 Ulrika Hogberg, **Interim Head of Foundation**
 Lauren Palmer, **Grants & Community Officer**
 Rachel Swithinbank, **Engagement & Events Manager**
 Heather Wentworth, **Team Administrator**

The Foundation team would like to thank their colleagues across the AELTC for their ongoing support and input.



THE WIMBLEDON FOUNDATION STATEMENT OF FINANCIAL ACTIVITIES (INCORPORATING AN INCOME AND EXPENDITURE ACCOUNT)	YEAR ENDED 31 JULY 2021 £000	YEAR ENDED 31 JULY 2020 £000
INCOME		
DONATIONS RECEIVED	2,503	2,080
INVESTMENT INTEREST RECEIVED	7	10
TOTAL INCOME	2,510	2,090
EXPENDITURE		
CHARITABLE ACTIVITIES	(2,674)	(2,662)
TOTAL EXPENDITURE	(2,674)	(2,662)
NET (EXPENDITURE) BEFORE INVESTMENT GAINS	(164)	(572)
NET INVESTMENT GAINS	204	100
NET INCOME/(EXPENDITURE) FOR THE YEAR	40	(472)
RECONCILIATION OF FUNDS		
FUNDS BROUGHT FORWARD	1,766	2,238
TOTAL FUNDS	1,806	1,766
BALANCE SHEET	AS AT 31 JULY 2021 £000	AS AT 31 JULY 2020 £000
FIXED ASSETS		
INVESTMENTS	1,058	854
CURRENT ASSETS		
DEBTORS	118	24
CASH AT BANK AND IN HAND	813	1,068
	931	1,092
CREDITORS: AMOUNTS FALLING DUE WITHIN ONE YEAR	(183)	(180)
NET CURRENT ASSETS	748	912
NET ASSETS	1,806	1,766
FUNDS OF THE FOUNDATION		
RESTRICTED FUND	27	27
UNRESTRICTED FUND	1,779	1,739
TOTAL FUNDS	1,806	1,766

Looking ahead to 2022

With the pandemic far from over, the Foundation will continue to support recovery efforts across society.

Following the inspiring response of the voluntary sector in Merton and Wandsworth to the impact of COVID-19 on our local community, the Foundation is assisting the sector's recovery by launching the Wimbledon Foundation Community Fund Plus. The fund will provide two-year continuation and development funding to organisations that have a strong track record of delivery through a recent Wimbledon Foundation grant. The programme is targeted at smaller, user-led charities and community groups, particularly those from under-represented backgrounds including minority groups, women and those with disabilities, as well as those working strategically to target disadvantage within Merton and Wandsworth.

Continuation funding will also be offered to our nine Health & Wellbeing Fund partners in recognition of the vital support they offer to our community and in light of the adverse impact of the pandemic on people's mental health.

A further donation of £170k has been awarded to Crisis to extend our support of their Rapid Rehousing programme. Our support will fund two Housing First coaches and two Housing Procurement officers who play a key role in supporting Crisis members into safe and sustainable accommodation as quickly as possible and ultimately leave homelessness behind for good.

We also look forward to building on our initiative to recruit more young people from our local community, particularly those from diverse or disadvantaged backgrounds, to work at The Championships and gain life skills and work experience that will help improve their future opportunities.



In the financial year 2020/21 the Wimbledon Foundation supported the following organisations:

9th Southside Scout Group
 ABF The Soldiers' Charity
 Ace of Clubs
 AFC Wimbledon Foundation
 Age UK Merton
 Age UK Wandsworth
 Anders Disability Badminton Charity
 ATTIC Theatre Company
 Baseless Fabric Theatre
 Battersea Arts Centre
 British Red Cross
 Caius House
 CARAS
 Cardiac Exercise Club
 Carney's Community
 Catch22
 Cedar House Support Group
 Citizens Advice Wandsworth
 City Harvest
 Commonsense Community Development Trust
 Community Drug and Alcohol Recovery Services (CDARS)
 Crisis
 Deen City Farm
 Disability Sports Coach
 Enable Leisure & Culture
 Endeavour Club
 Ethnic Minority Centre
 Fareshare

FAST Project
 Fields in Trust
 Food for Life Wandsworth
 Free2B Alliance
 Generate Opportunities
 Give It Your Max
 Glass Door Homeless Charity
 Home-Start Merton
 Home-Start Wandsworth
 IC Philanthropy Foundation
 Inner Strength Network CIC
 JAGS Foundation
 Junction Community Trust
 Katherine Low Settlement
 Kunsaka
 Learn to Love to Read
 Linden Lodge Charitable Trust
 London Community Foundation
 Magic Bus
 Mayor of Merton's Charities
 Mayor of Wandsworth's Charities
 Merton Centre for Independent Living
 Merton Connected
 Merton Giving
 Merton Mencap
 Merton Vision
 Metropolitan & City Police Orphans Fund
 Mitcham Town Community Trust
 Morden Little League

Mother and Child Welfare Organisation
 Naz Legacy Foundation
 NHS Charities Together
 Off the Record Youth Counselling
 Parallel Youth Enterprise
 Paul's Cancer Support Centre
 PCC of St Michael and All Angels with St Stephen
 Place2Be
 Providence House Youth Club
 Queen Elizabeth's Foundation for Disabled People
 Quick Start Hockey
 Rackets Cubed
 Regenerate
 Regenerate-RISE
 Royal Air Force Benevolent Fund
 Royal Navy & Royal Marines Charity
 Royal Trinity Hospice
 Sen Talk CIC
 Share Community
 South West London Law Centres
 SPEAR
 Spires
 Sport4Health CIC
 St George's Hospital Charity
 Sustainable Merton
 Tennis First

Tennis for Free
 The Dan Maskell Tennis Trust
 The Fire Fighters Charity
 The Prince's Trust
 Thrive
 Tooting Community Kitchen
 Unique Talent CIC
 Uptown Youth Services
 Wandsworth Community Chaplaincy Trust
 Wandsworth Community Empowerment Network
 Waste Not Want Not Battersea
 WaterAid
 YMCA London St Pauls Group
 Youth Sport Trust



Wimbledon Foundation

AELTC
Church Road
London
SW19 5AE

foundation@aeltc.com
wimbledon.com/foundation
020 8971 2707
  @WimbledonFdn

The Wimbledon Foundation is a charitable company limited by guarantee.
Registered office: Church Road, Wimbledon SW19 5AE.
Charity registration number 1156996. Company registration number 8559364.

All images ©AELTC, WaterAid or associated charities.